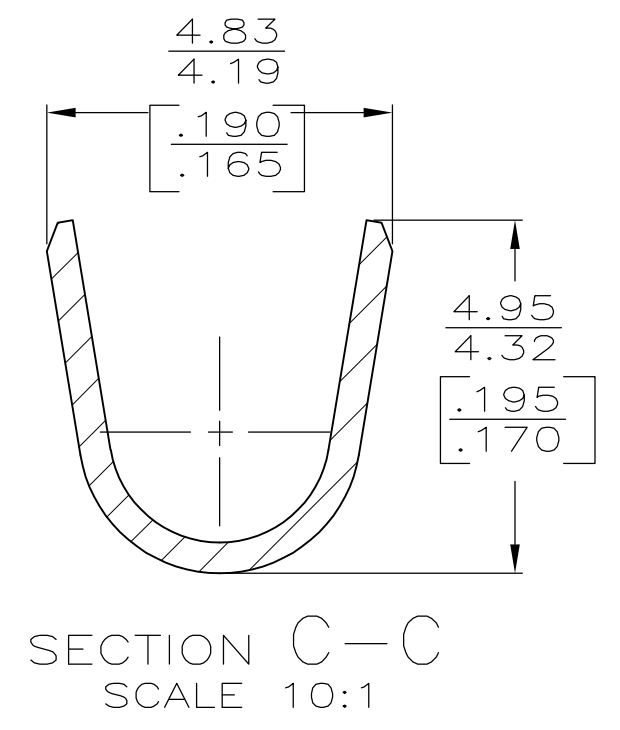
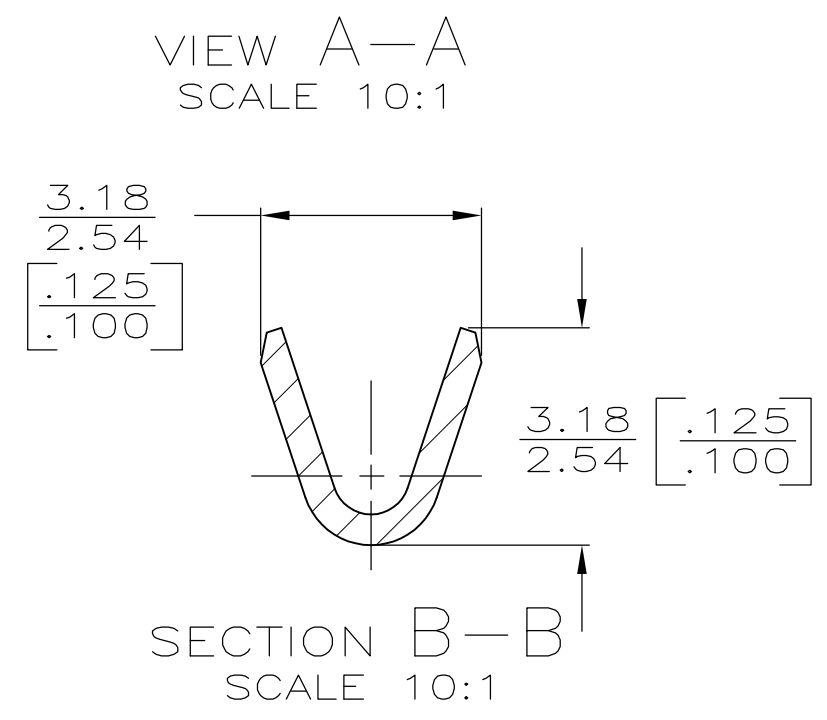
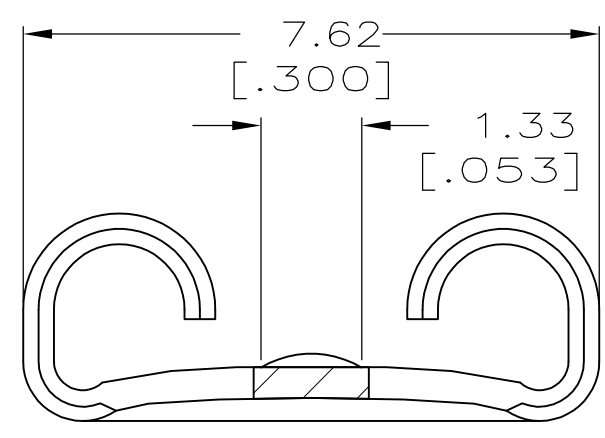
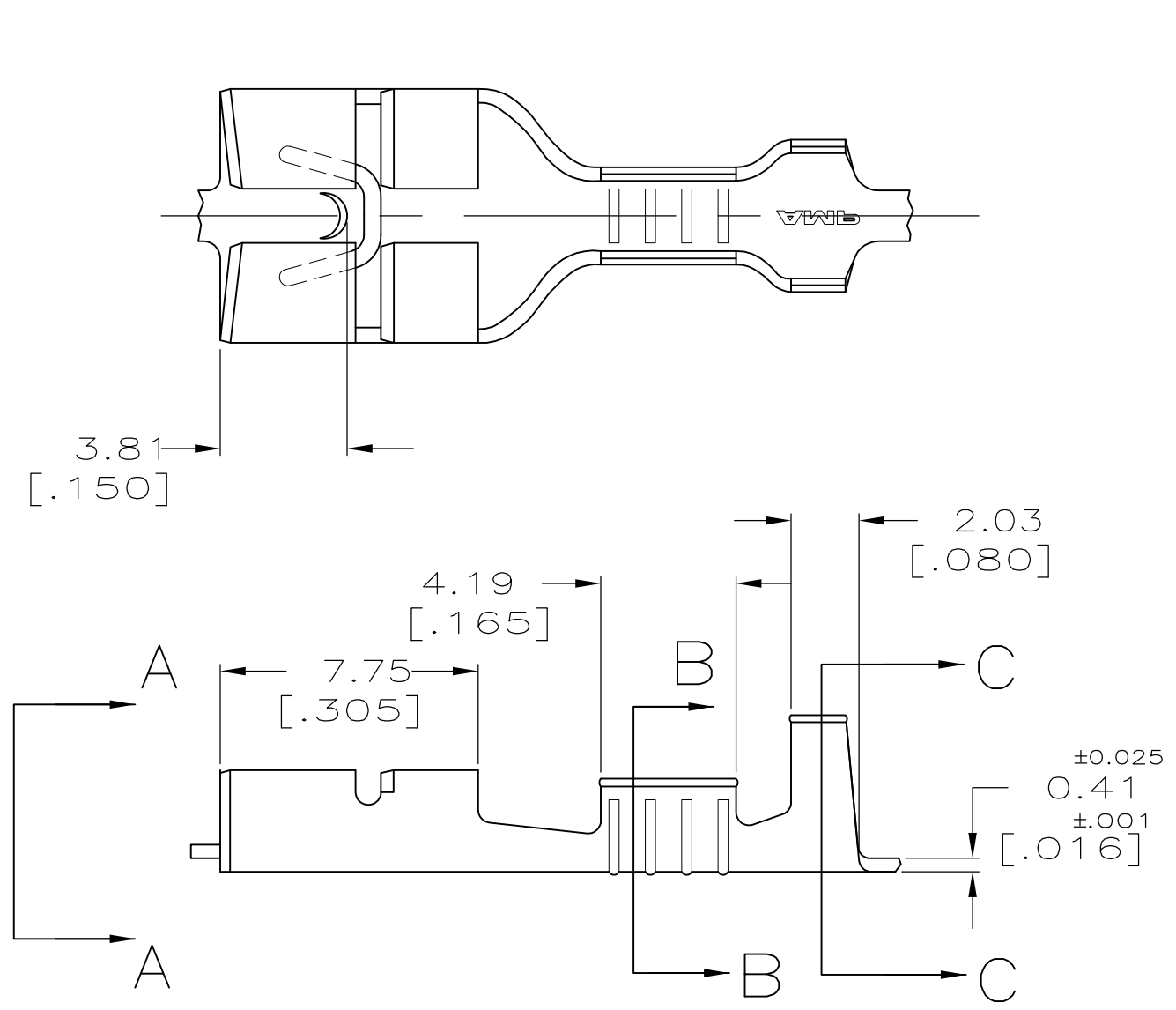


THIS DRAWING IS UNPUBLISHED. RELEASED FOR PUBLICATION
 © COPYRIGHT - By - ALL RIGHTS RESERVED.

LOC	DIST	REVISIONS					
AF	50	P	LTR	DESCRIPTION	DATE	DWN	APVD
		D1		REVISED PER ECO-13-010050	18JUN13	JR	PD

1 CONTINUOUS STRIP ON REELS



2.29-3.30 [.090-.130] DIA	0.3-0.8mm ² [22-18] AWG	0.813 [.032]	TIN	63609-2
INSULATION RANGE	WIRE SIZE	MATING TAB THK ±0.025 [.001]	-	63609-1
			FINISH	PART NO

F, 0, OR OVERLAP	3.30 [.130]	5.59 [.220]	F	2.29 [.090]	1.42 [.056]	0.8mm ² [18]
					1.30 [.051]	0.5mm ² [20]
					1.24 [.049]	0.3mm ² [22]
TYPE	WIDTH	STRIP LENGTH ±0.38 ±[.015]	TYPE	WIDTH	HEIGHT ±.051 [±.002]	WIRE
INSUL BARREL CRIMP			WIRE BARREL CRIMP			

THIS DRAWING IS A CONTROLLED DOCUMENT.

DWN JR RUTH 4/3/91	TE Connectivity RECEPTACLE, FASTON, 6.35 [.250] SERIES			
CHK P FORTNEY 4/3/91				
APVD C MEYERS 4/3/91				
PRODUCT SPEC				
APPLICATION SPEC	NAME			
WEIGHT	SIZE	CAGE CODE	DRAWING NO	RESTRICTED TO
CUSTOMER DRAWING	A3	00779	C-63609	-
	SCALE	SHEET	REV	
	5:1	1 OF 1	D1	

MATERIAL: BRASS
FINISH: SEE TABLE